

**Below are some guideline images for shoulder strap mounting points required for use of H.A.N.S. device, with notes outlining good and bad practice.**



Good. The ends of the shoulder straps should be rolled up and be tie wrapped.



Not acceptable. Poor structural strength. Tubing same as safety cage recommended.



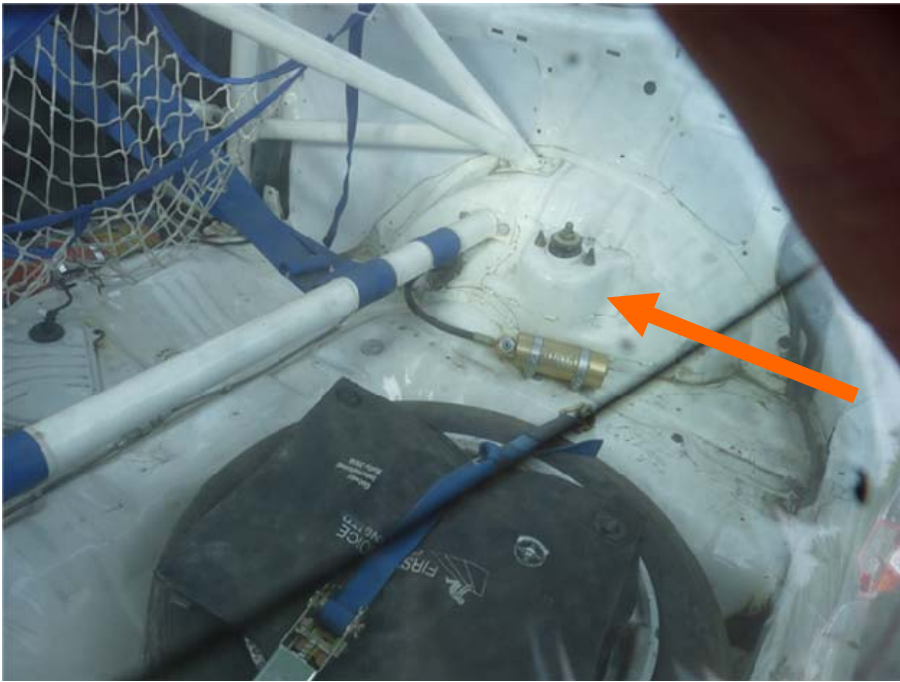
Good. Transverse pipe closer to main hoop preferred



Lengths over 450mm (18") should be crossed. See [www.fia.com](http://www.fia.com)



Good. Lateral bar positioned behind cage diagonals & mounted on turrets.



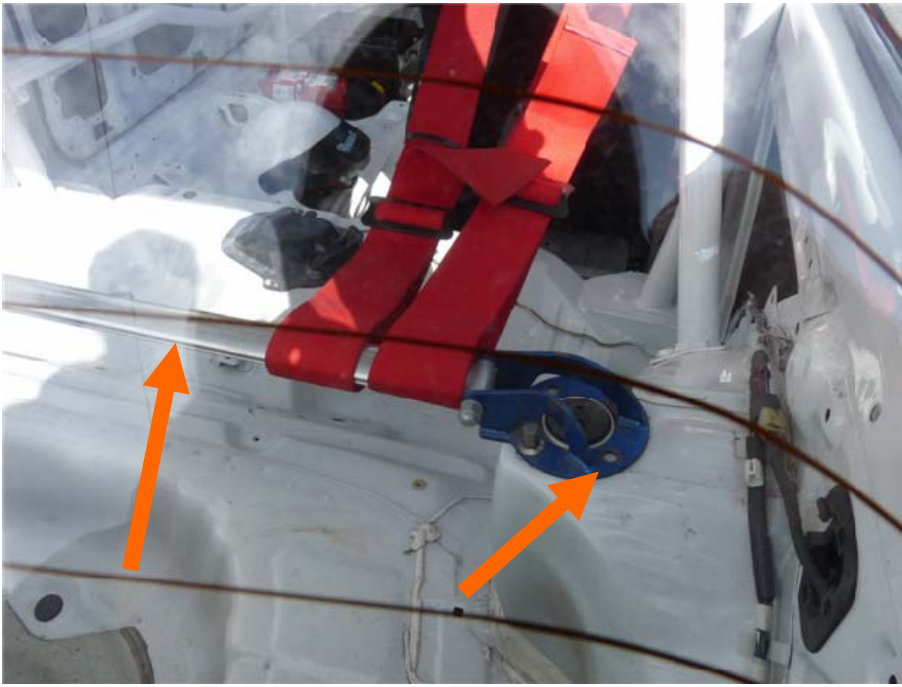
OK. But anchorage on suspension (or behind) turrets preferred.



Not acceptable. Poor structural strength. Tubing same as safety cage recommended.



Good. Strong bolt on mounting point.



Not acceptable. Poor structural strength. Tubing same as safety cage recommended.



OK. Clamp with four bolts preferred.



Good. Lateral bar positioned behind cage diagonals.



Plated support arch  
to arch required



Not acceptable. Poor  
structural strength.  
Tubing same as  
safety cage recom-  
mended.



Good



Not acceptable. Poor structural strength. Tubing same as safety cage recommended.



Good. Mounting & Belts crossed (Over 18")



Insufficient spread of load. Needs arch to arch support